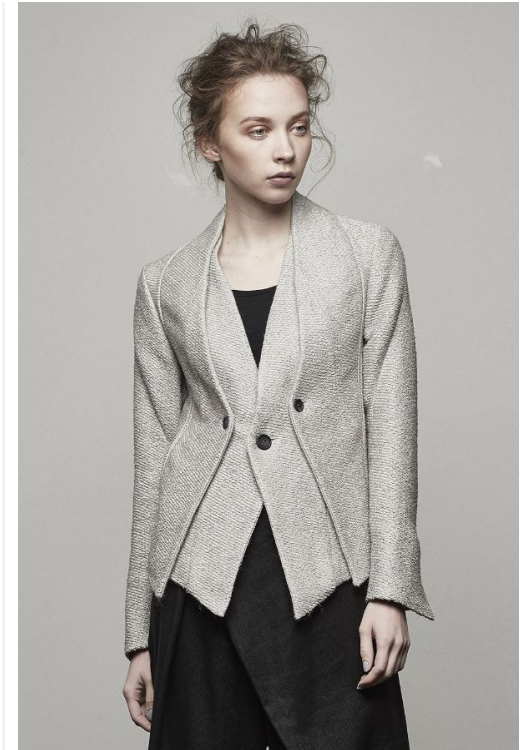


outer



DK11-10-J01

Linen Cotton Paper Tweed Jacket

**EXW** US\$575.00 (Excl. tax)**color** black  
**size** 1 / 2 / 3 / 4 / 5**Matl** Main 72% washi(Japanese paper) 21%  
cotton 7% Linen**COO** JAPAN**Delivery** 07/31/2021 ~ 09/02/2021**Note** · About the design and pattern Jacket:  
The pattern is designed so that the thick part of  
the shoulder is compact and the interlining is  
designed so that it does not lose the softness of  
the fabric and does not adhere as much as  
possible. The lining is only on the body and  
the sleeves are not lined.

DK11-10-J01

Linen Cotton Paper Tweed Jacket

**EXW** US\$575.00 (Excl. tax)**color** gray  
**size** 1 / 2 / 3 / 4 / 5**Matl** Main 72% washi(Japanese paper) 21%  
cotton 7% Linen**COO** JAPAN**Delivery** 07/31/2021 ~ 09/02/2021**Note** · About the design and pattern Jacket:  
The pattern is designed so that the thick part of  
the shoulder is compact and the interlining is  
designed so that it does not lose the softness of  
the fabric and does not adhere as much as  
possible. The lining is only on the body and  
the sleeves are not lined.

DK11-10-J02-001

Linen Cotton Paper Tweed Layered  
Jacket**EXW** US\$520.00 (Excl. tax)**color** black  
**size** 1 / 2 / 3 / 4 / 5**Matl** Main 72% washi(Japanese paper) 21%  
cotton 7% Linen**COO** JAPAN**Delivery** 07/31/2021 ~ 09/02/2021**Note** · About the design and pattern Jacket:  
The pattern is designed so that the thick part of  
the shoulder is compact and the interlining is  
designed so that it does not lose the softness of  
the fabric and does not adhere as much as  
possible.

DK11-10-J02-001

Linen Cotton Paper Tweed Layered  
Jacket**EXW** US\$520.00 (Excl. tax)**color** gray  
**size** 1 / 2 / 3 / 4 / 5**Matl** Main 72% washi(Japanese paper) 21%  
cotton 7% Linen**COO** JAPAN**Delivery** 07/31/2021 ~ 09/02/2021**Note** · About the design and pattern Jacket:  
The pattern is designed so that the thick part of  
the shoulder is compact and the interlining is  
designed so that it does not lose the softness of  
the fabric and does not adhere as much as  
possible.

outer



DK11-06-C02

6oz Cotton Linen Stretch Denim Coat

**EXW** US\$699.00 (Excl. tax)**color** navy  
**size** 1 / 2 / 3 / 4 / 5**Matl** Main 75% Cotton 20% Linen 5%  
Polyurethane**COO** JAPAN**Delivery** 08/15/2021 ~ 09/02/2021**Note**

DK11-09-C01

Silk Linen Deformed Herringbone  
Coat**EXW** US\$410.00 (Excl. tax)**color** black  
**size** 1 / 2 / 3 / 4 / 5**Matl** --**COO** JAPAN**Delivery** 08/31/2021 ~ 10/02/2021**Note**

tops



DK11-CS07-H04

Low Gauge Seed Stitch Knit Cardigan

**EXW** US\$292.00 (Excl. tax)**color** gray  
**size** 1 / 3 / 5**Matl** Main 50% Linen 50% Cotton  
**COO** JAPAN  
**Delivery** 08/01/2021 ~ 09/02/2021**Note**

DK11-CS07-H04

Low Gauge Seed Stitch Knit Cardigan

**EXW** US\$292.00 (Excl. tax)**color** white  
**size** 1 / 3 / 5**Matl** Main 50% Linen 50% Cotton  
**COO** JAPAN  
**Delivery** 08/01/2021 ~ 09/02/2021**Note**

DK11-CS06-H03

Linen Cotton Double Knit Cardigan

**EXW** US\$175.00 (Excl. tax)**color** white  
**size** 1 / 3 / 5**Matl** Main 100% Linen  
**COO** JAPAN  
**Delivery** 08/01/2021 ~ 09/02/2021**Note**

DK11-CS06-H03

Linen Cotton Double Knit Cardigan

**EXW** US\$175.00 (Excl. tax)**color** black  
**size** 1 / 3 / 5**Matl** Main 100% Linen  
**COO** JAPAN  
**Delivery** 08/01/2021 ~ 09/02/2021**Note**

tops



DK11-11-J04

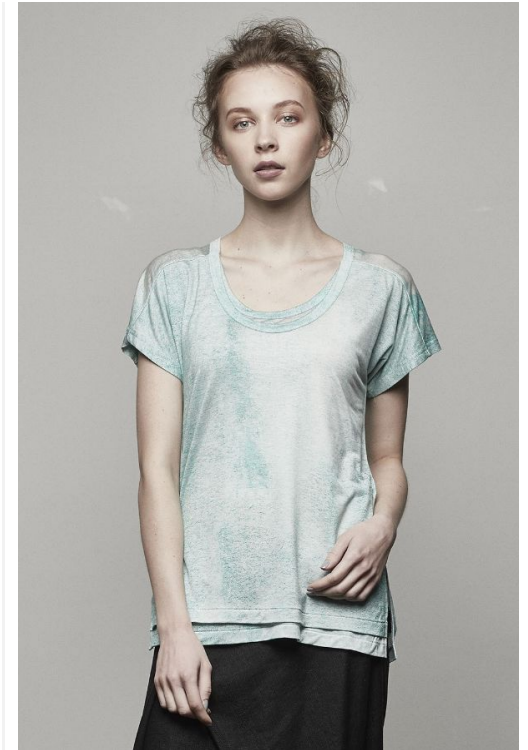
Abstract Tweed Jacket

**EXW** US\$234.00 (Excl. tax)**color** gray  
**size** 3**Matl** Main 42% Cotton 27% Acrylic 15%  
Polyurethane 9% Nylon 7% viscose  
**COO** JAPAN  
**Delivery** 08/01/2021 ~ 08/03/2021**Note**

DK11-04-T03

Linen Cotton Paper Tweed Layered  
Jacket**EXW** US\$163.00 (Excl. tax)**color** white  
**size** 1 / 2 / 3**Matl** Main 65% Cotton 35% Rayon  
**COO** JAPAN  
**Delivery** 07/01/2021 ~ 09/01/2021**Note**

DK11-04-T03

Linen Cotton Paper Tweed Layered  
Jacket**EXW** US\$163.00 (Excl. tax)**color** black  
**size** 1 / 2 / 3**Matl** Main 65% Cotton 35% Rayon  
**COO** JAPAN  
**Delivery** 07/01/2021 ~ 09/01/2021**Note**

DK11-CS02-T06

"Gradation" Print / 30 Tencel Jersey T-  
shirt**EXW** US\$105.00 (Excl. tax)**color** blue  
**size** 1 / 2 / 3 / 4 / 5**Matl** Main 100% Tencel  
**COO** JAPAN  
**Delivery** 07/01/2021 ~ 07/03/2021**Note**

tops



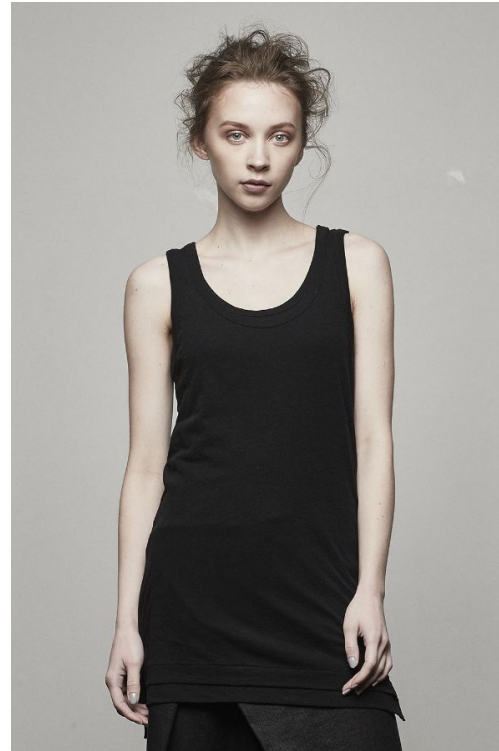
DK11-CS02-T06

"Gradation" Print / 30 Tencel Jersey T-shirt

**EXW** US\$105.00 (Excl. tax)color yellow  
size 1 / 2 / 3 / 4 / 5**Matl** Main 100% Tencel  
**COO** JAPAN  
**Delivery** 07/01/2021 ~ 07/03/2021**Note**

DK11-CS02-T06

"Gradation" Print / 30 Tencel Jersey T-shirt

**EXW** US\$105.00 (Excl. tax)color test  
size 1 / 2 / 3 / 4 / 5**Matl** Main 100% Tencel  
**COO** JAPAN  
**Delivery** 07/01/2021 ~ 07/03/2021**Note**

DK11-CS04-T07

40/1 Cotton Linen Hard Twist Yarn Jersey Tank top

**EXW** US\$94.00 (Excl. tax)color black  
size 1 / 3 / 5**Matl** Main 100% cotton  
**COO** JAPAN  
**Delivery** 07/01/2021 ~ 07/03/2021**Note**

jewelry



fi-01-024

Ring 024 Millegrue

**EXW** US\$0.00 (Excl. tax)**color** yellow**ring size** 7 / 8 / 9 / 10 / 11 / 12 / 13 / 14 / 15**Matl** Main 10 gold**COO** JAPAN**Delivery** 06/15/2021 ~ 06/16/2021**Note**

goods



DK12-AC01-A01

merino Wool Double Weave Stole

**EXW** US\$0.00 (Excl. tax)**color** gray  
**goods** F**Matl** Main 62% Wool 38% Cotton**COO** JAPAN**Delivery** 09/01/2021 ~ 09/02/2021**Note**

## bottoms



DK11-05-S04

Shuttle Silk Cotton Gradation Skirt

**EXW** US\$0.00 (Excl. tax)**color** gray  
**bottoms** 26 / 28 / 30 / 32**Matl** Main 51% Silk 49% Cotton  
**COO** JAPAN  
**Delivery** 08/01/2021 ~ 08/02/2021**Note** · About the fabric The outer fabric is made by Faliero Sarti in Italy. A composite fiber of cotton, ramie and canapa (hemp). It is an eco-friendly and sustainable material. In particular, canapa (hemp) can be cultivated with the smallest amount of water out of all hemp and it is a raw material that has been attracting a lot of attention from the

DK11-05-S04

Shuttle Silk Cotton Gradation Skirt

**EXW** US\$0.00 (Excl. tax)**color** black  
**bottoms** 26 / 28 / 30 / 32**Matl** Main 51% Silk 49% Cotton  
**COO** JAPAN  
**Delivery** 08/01/2021 ~ 08/02/2021**Note** · About the fabric The outer fabric is made by Faliero Sarti in Italy. A composite fiber of cotton, ramie and canapa (hemp). It is an eco-friendly and sustainable material. In particular, canapa (hemp) can be cultivated with the smallest amount of water out of all hemp and it is a raw material that has been attracting a lot of attention from the

DK11-06-S01

6oz Cotton Linen Stretch Skirt

**EXW** US\$0.00 (Excl. tax)**color** navy  
**bottoms** 26 / 28 / 30 / 32**Matl** Main 75% Cotton 20% Linen 5%  
Polyurethane  
**COO** JAPAN  
**Delivery** 08/01/2021 ~ 08/02/2021**Note** · About the design and pattern Jacket: The pattern is designed so that the thick part of the shoulder is compact and the interlining is designed so that it does not lose the softness of the fabric and does not adhere as much as possible.



## Sunglasses



RG1022TVA

sunglasses

**EXW** US\$313.00 (Excl. tax)**color** Black  
**size** OS**Matl** 100% Cotton  
**COO** CHINA  
**Delivery** 03/01/2022 ~ 04/02/2022

**Note** The shade part is attached to the glasses of clear lens (\* some have a little color) by a magnet, and it is comfortable to put on and take off with one touch. The base part of the glasses can be used as "corrective glasses" by inserting corrective lenses, so it is of course recommended for those who are looking for good glasses.



RG1022TVA

sunglasses

**EXW** US\$313.00 (Excl. tax)**color** Gold  
**size** OS**Matl** 100% Cotton  
**COO** CHINA  
**Delivery** 03/01/2022 ~ 04/02/2022

**Note** The shade part is attached to the glasses of clear lens (\* some have a little color) by a magnet, and it is comfortable to put on and take off with one touch. The base part of the glasses can be used as "corrective glasses" by inserting corrective lenses, so it is of course recommended for those who are looking for good glasses.



RG1022TVA

sunglasses

**EXW** US\$313.00 (Excl. tax)**color** Jade  
**size** OS**Matl** 100% Cotton  
**COO** CHINA  
**Delivery** 03/01/2022 ~ 04/02/2022

**Note** The shade part is attached to the glasses of clear lens (\* some have a little color) by a magnet, and it is comfortable to put on and take off with one touch. The base part of the glasses can be used as "corrective glasses" by inserting corrective lenses, so it is of course recommended for those who are looking for good glasses.



RG1022TVA

sunglasses

**EXW** US\$313.00 (Excl. tax)**color** Vintage  
**size** OS**Matl** 100% Cotton  
**COO** CHINA  
**Delivery** 03/01/2022 ~ 04/02/2022

**Note** The shade part is attached to the glasses of clear lens (\* some have a little color) by a magnet, and it is comfortable to put on and take off with one touch. The base part of the glasses can be used as "corrective glasses" by inserting corrective lenses, so it is of course recommended for those who are looking for good glasses.